

11-10-2004

A Million SecondChandraView of Cassiopeia A

Una Hwang
University of Maryland at College Park

J. Martin Laming
Naval Research Laboratory

Carles Badenes
Institute of Space Studies of Catalonia

Fred Berendse
Naval Research Laboratory

John Blondin
North Carolina State University

See next page for additional authors

Follow this and additional works at: <https://digitalcommons.dartmouth.edu/facoa>



Part of the [Stars, Interstellar Medium and the Galaxy Commons](#)

Recommended Citation

Hwang, Una; Laming, J. Martin; Badenes, Carles; Berendse, Fred; Blondin, John; Cioffi, Denis; DeLaney, Tracey; Dewey, Daniel; and Fesen, Robert, "A Million SecondChandraView of Cassiopeia A" (2004). *Open Dartmouth: Faculty Open Access Articles*. 2258.
<https://digitalcommons.dartmouth.edu/facoa/2258>

This Article is brought to you for free and open access by Dartmouth Digital Commons. It has been accepted for inclusion in Open Dartmouth: Faculty Open Access Articles by an authorized administrator of Dartmouth Digital Commons. For more information, please contact dartmouthdigitalcommons@groups.dartmouth.edu.

Authors

Una Hwang, J. Martin Laming, Carles Badenes, Fred Berendse, John Blondin, Denis Cioffi, Tracey DeLaney, Daniel Dewey, and Robert Fesen

A MILLION SECOND *CHANDRA* VIEW OF CASSIOPEIA A

UNA HWANG,^{1,2} J. MARTIN LAMING,³ CARLES BADENES,⁴ FRED BERENDSE,⁵ JOHN BLONDIN,⁶ DENIS CIOFFI,⁷
TRACEY DELANEY,⁸ DANIEL DEWEY,⁹ ROBERT FESEN,¹⁰ KATHRYN A. FLANAGAN,⁹ CHRISTOPHER L. FRYER,¹¹
PARVIZ GHAVAMIAN,¹² JOHN P. HUGHES,¹³ JON A. MORSE,¹⁴ PAUL P. PLUCINSKY,¹⁵ ROBERT PETRE,¹ MARTIN POHL,¹⁶
LAWRENCE RUDNICK,⁸ RAVI SANKRIT,¹² PATRICK O. SLANE,¹⁵ RANDALL K. SMITH,^{1,12}
JACCO VINK,¹⁷ AND JESSICA S. WARREN¹³

Received 2004 July 16; accepted 2004 September 28; published 2004 October 8

ABSTRACT

We introduce a million second observation of the supernova remnant Cassiopeia A with the *Chandra X-Ray Observatory*. The bipolar structure of the Si-rich ejecta (northeast jet and southwest counterpart) is clearly evident in the new images, and their chemical similarity is confirmed by their spectra. These are most likely due to jets of ejecta as opposed to cavities in the circumstellar medium, since we can reject simple models for the latter. The properties of these jets and the Fe-rich ejecta will provide clues to the explosion of Cas A.

Subject headings: supernova remnants — supernovae: general — X-rays: individual (Cassiopeia A) — X-rays: ISM

1. INTRODUCTION

The young core-collapse supernova remnant Cassiopeia A is a unique astrophysical laboratory for studying ejecta and shocks in remnants because of its brightness across the electromagnetic spectrum and its well-constrained age and distance. Earlier X-ray observations with the *Chandra Observatory* have already produced significant results, such as the discovery of the compact stellar remnant (Tananbaum et al. 1999), identification of major types of nucleosynthesis products (Hughes et al. 2000; Laming & Hwang 2003; Hwang & Laming 2003), measurement of magnetic fields (Vink & Laming 2003), identification of the forward and reverse shocks (Gotthelf et al. 2001), and measurement of small-scale proper motions

(DeLaney & Rudnick 2003; DeLaney et al. 2004). The remnant is believed to have lost most of its progenitor mass prior to explosion at $\sim 4 M_{\odot}$ (e.g., Willingale et al. 2003; Chevalier & Oishi 2003; Laming & Hwang 2003).

A 1 Ms observation of Cas A was performed as a Very Large Project (VLP) in *Chandra* Cycle 5. It was largely motivated by two papers (Laming & Hwang 2003, hereafter LH03; Hwang & Laming 2003, hereafter HL03), which used *Chandra*'s subarcsecond angular resolution to isolate compact ejecta features in Cas A. Since the reverse shock crosses these knots in a very short time compared to the age of the remnant, the extracted knot spectra can be characterized with a single electron temperature and ionization age. These are then straightforwardly compared to model results to infer details of the ejecta density profile, the explosion asymmetry, and with further modest assumptions, the Lagrangian mass coordinates of ejecta structures. With earlier *Chandra* observations, individual ejecta knots could not always be isolated when spectra were extracted over several image resolution elements. A 1 Ms exposure allows nearly every pixel of the ACIS CCD image of Cas A to provide a spectrum for fitting. Revisiting the work of LH03 and HL03 with a larger selection of Cas A ejecta knots would be the first full analysis of its kind and a significant effort that is well beyond the scope of this Letter. In this introductory Letter, we present new images, highlight some results immediately revealed by the deep pointing, and indicate areas of future work where significant findings are expected.

2. OBSERVATIONS AND DATA REDUCTION

Cas A was observed for 1 Ms with the back side-illuminated S3 chip of the Advanced CCD Imaging Spectrometer (ACIS) on the *Chandra Observatory*. The first 50 ks segment was completed between 2004 February 8 and 9, with the same pointing, frame time (3.2 s), and roll angle (325°) as for two earlier 50 ks ACIS observations to facilitate proper-motion studies. The remaining 950 ks were executed in eight segments between 2004 April 14 and May 6 with a 3.0 s frame time and no roll angle constraints (the roll angles drifted from 40° to 65°). The aim point in the first 50 ks segment (and in the earlier 50 ks observations) is roughly 1.9 southeast of the point source, while it is 2.4 northeast in the remaining segments. Cas A's

¹ NASA GSFC, Code 662, Greenbelt, MD 20771; hwang@milkyway.gsfc.nasa.gov, rob@milkyway.gsfc.nasa.gov, rsmith@milkyway.gsfc.nasa.gov.

² University of Maryland, College Park, MD 20742.

³ Naval Research Laboratory, Code 7674L, Washington, DC 20375; j.laming@ssd5.nrl.navy.mil.

⁴ Institut d'Estudis Espacials de Catalunya, Edifici Nexus, Gran Capita 24, Desp. 2-4, E-08034 Barcelona, Spain; badenes@ieec.fcr.es.

⁵ Naval Research Laboratory, Code 7655.7, Washington, DC 20375; fberendse@ssd5.nrl.navy.mil.

⁶ North Carolina State University, Box 8202, Raleigh, NC 27695; john_blondin@ncsu.edu.

⁷ George Washington University, Washington, DC 20052; professor@cioffi.us.

⁸ University of Minnesota, 116 Church Street, Southeast, Minneapolis, MN 55455; tdelaney@astro.umn.edu, larry@astro.umn.edu.

⁹ Center for Space Research, Massachusetts Institute of Technology, 70 Vassar Street, Building 37, Cambridge, MA 02139; dd@space.mit.edu, kaf@space.mit.edu.

¹⁰ Dartmouth College, 6127 Wilder Lab, Hanover, NH 03755; fesen@snr.dartmouth.edu.

¹¹ Los Alamos National Laboratory, P.O. Box 1663, Los Alamos, NM 87545; fryer@lanl.gov.

¹² Johns Hopkins University, 3400 Charles Street, Baltimore, MD 21218; parviz@pha.jhu.edu, ravi@pha.jhu.edu.

¹³ Rutgers University, 136 Frelinghuysen Road, Piscataway, NJ 08854; jackph@physics.rutgers.edu, jesawyer@physics.rutgers.edu.

¹⁴ Arizona State University, Box 871504, Tempe, AZ 85287; jon.morse@asu.edu.

¹⁵ Harvard-Smithsonian Center for Astrophysics, 60 Garden Street, Cambridge, MA 02138; plucinsk@head.cfa.harvard.edu, slane@head.cfa.harvard.edu.

¹⁶ Iowa State University, Ames, IA 50011; mkp@iastate.edu.

¹⁷ SRON National Institute for Space Research, Sorbonnelaan 2, NL-3584 CA Utrecht, Netherlands; j.vink@srn.nl.

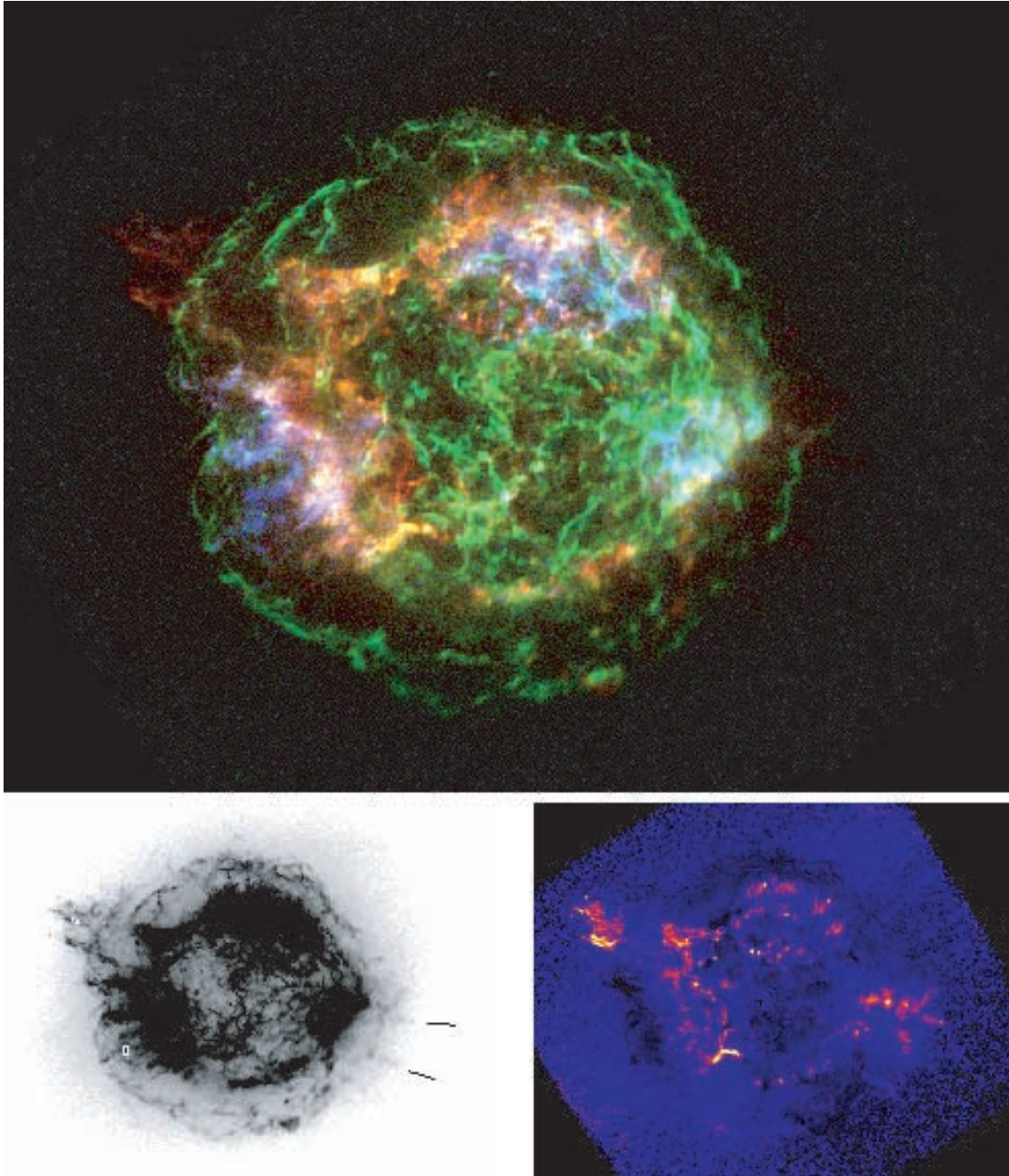


FIG. 1.—*Top*: Three-color image of Cas A with red = Si He α (1.78–2.0 keV), blue = Fe K (6.52–6.95 keV), and green = 4.2–6.4 keV continuum. The remnant is roughly 5' across. *Bottom left*: Overexposed broadband image showing faint features. The spectral regions are indicated (*top left box*: northeast jet; *bottom left box*: Fe-rich region; lines at bottom right point to two southwest jet filaments). Smearing associated with CCD readout causes the low surface brightness artifacts outside the remnant to the southeast and northwest. *Bottom right*: On the same scale, the ratio image of the Si He α (1.78–2.0 keV) and 1.3–1.6 keV (Mg He α , Fe L), without subtraction of the continuum contribution. The image highlights the jet and counterjet traced by Si emission, although features at the lowest intensity levels are uncertain.

high count rate requires the use of only a single CCD chip and accumulation of the data in GRADED mode to avoid telemetry loss. The spectra thus cannot be corrected to reduce the effects of charge transfer inefficiency.

We retain only events with energies from 0.3 to 10 keV and apply time-dependent gain corrections for the S3 chip. Time segments with background flares were excluded by making consistent count rate cuts based on the off-source light curve. The filtered data set contained 282 million photons over the 5' extent of Cas A and had an exposure time of 980 ks.

3. RESULTS

Overview.—A three-color composite of Cas A in Si He α (1.78–2.0 keV; *red*), Fe K (6.52–6.95 keV; *blue*) and 4.2–6.4 keV continuum emission (*green*) is shown in Figure 1 (*top*). The images have not been smoothed nor the continuum contribution removed (i.e., the images contain both line and continuum photons). The figure shows that the filamentary 4–6 keV continuum emission is fragmented, but circular overall, and present throughout the remnant image (see also Gotthelf

et al. 2001). Most of this emission is probably synchrotron emission generated at the forward shock. The reverse-shocked ejecta emission, by contrast, is highly noncircular, with the prominent linear jets of Si-rich ejecta (*in red*) in the northeast, their fainter counterparts to the southwest, and Fe-rich ejecta fingers (*in blue*) extending to the forward shock in the southeast (see also Hughes et al. 2000; Hwang et al. 2000).

The image revealed several faint point sources around the remnant that matched the positions of optical stars, thereby permitting accurate coordinate transformation of the image relative to the USNO-A2.0 catalog. The resulting measured position of the remnant's central X-ray point source was found to be $\alpha = 23^{\text{h}}23^{\text{m}}27^{\text{s}}.945 \pm 0.08$, $\delta = 58^{\circ}48'42''.45 \pm 0''.6$ (J2000.0) (see R. A. Fesen et al. 2004, in preparation).

The overexposed broadband image shown in Figure 1 (*bottom left*) highlights faint features in Cas A, including the jet structures in the northeast and southwest. An X-ray jet counterpart in the southwest had been hinted in earlier *Chandra* observations (Hwang et al. 2000) but is clearly evident in the new image. It is further highlighted in the ratio image of Si XIII He α (plus continuum, 1.78–2.0 keV) relative to the 1.3–1.6 keV band (mostly weak Mg XI and Fe L plus continuum) shown in Figure 1 (*bottom right*; see also Vink 2004). The southwest jet filaments are fainter, have a larger opening angle on the sky, and do not extend as far inward as their northeast counterparts. Although the point source is clearly offset relative to the jets as a whole (Fig. 1, *bottom right*), it is well aligned with the longest northeast filament and the lower of two straight southwest filaments marked in Figure 1 (*bottom left*). A bipolar ejecta structure is already known from optical spectral observations (Fesen 2001) that reveal high-velocity ($>10,000$ km s $^{-1}$) ejecta knots beyond the forward shock in the jet regions and is now also seen in 24 μ m dust emission (Hines et al. 2004).

The chemical similarity of the jets is demonstrated by their spectra, shown in Figure 2 (*left*). Both the spectrum from a filament in the northeast jet and the summed spectrum of two southwest jet filaments (all at similar radial distance 3.3 from the compact source) show strong Si, S, Ar, and Ca emission, as well as a Fe K blend. Their thermal characteristics are also similar, with preliminary spectral fits to simple models with an underlying O continuum giving temperatures kT of ~ 1 –1.5 keV and ionization ages $n_e t$ a few times 10^{11} cm $^{-3}$ s. These knots resemble the typical Si/O-rich knots studied by LH03.

In the southeast, where extremely Fe-rich material has been observed, the spectrum of the highly Fe-rich cloud discussed in HL03 is confirmed by the VLP spectrum shown in Figure 2 (*right*) to be virtually pure Fe. The spectrum is dominated by Fe L and Fe K line blends and Fe continuum. Highly Fe-rich ejecta are sites of complete Si burning in the explosion and may also harbor some of the ^{44}Ti known to have been synthesized in α -rich freezeout (Iyudin et al. 1994; Vink et al. 2001; Vink & Laming 2003). As such, they originated close to the explosion center and are very sensitive to the details of the explosion. HL03 estimate that a few percent of the total Fe ejected by the explosion is currently visible in X-rays, which is similar to the fraction of Ni inferred to have been mixed out into the envelope of SN 1987A by Rayleigh-Taylor instabilities during its explosion (Pinto & Woosley 1988). Identification and modeling of other Fe-rich regions will be the focus of future work and will offer the best comparisons with theoretical models for Fe production.

The nature of the jets.—Jet structures can result from an explosion into local cavities of the interstellar medium formed by asymmetric winds in the late evolutionary phases of the progenitor star (Blondin et al. 1996). However, models of the

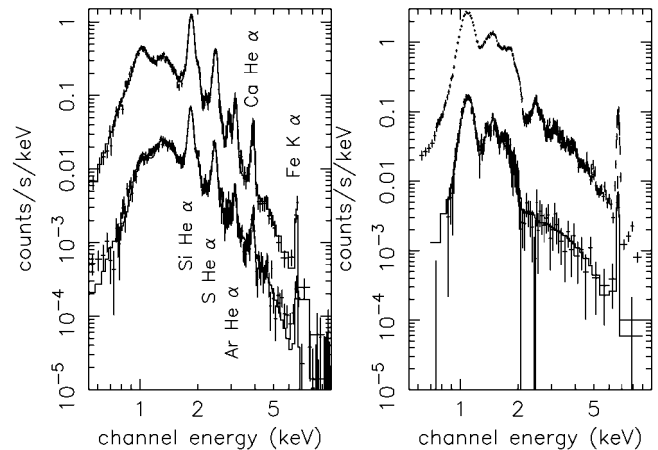


FIG. 2.—*Left*: Comparison of spectrum of a filament in the northeast jet scaled by a factor of 15 and the summed spectrum of two filaments in the southwest counterjet (*right*). The filaments are at roughly the same radius and both display strong Si, S, Ca, and Ar lines and a modest Fe K line. *Right*: Comparison of Fe cloud spectrum in summed 50 ks ACIS observations of 2000 and 2002 January (scaled by 15) and VLP ACIS observations from 2004, confirming the relative purity of the Fe, seen in both line and continuum emission.

shock trajectories by Truelove & McKee (1999) as implemented by LH03 (but for lower circumstellar medium density) show that the forward shock decelerates very slowly in a local cavity. The reverse shock is thus not strong enough to progress through enough ejecta to yield the relatively high ionization age observed for the plasma in the jetlike region of Cas A. We tentatively conclude that Cas A was formed by an asymmetric explosion that produced jets of ejecta, although more detailed work is required for confirmation. This conclusion is corroborated by the chemical enrichment and high expansion velocities of the optically emitting jet knots (Fesen 2001). Since the optical ejecta knots are generally accepted as being minimally decelerated by the circumstellar medium, an origin in the explosion mechanism is suggested for the jet knots, which have significantly higher velocities than elsewhere.

Interesting questions then arise as to the nature and energetics of the jets. A jet-induced explosion (e.g., Khokhlov et al. 1999) requires an overdense jet to explode the star and is expected to leave large amounts of Fe ejecta in the jet regions. This contradicts existing X-ray and optical observations of Cas A (e.g., Hughes et al. 2000; Fesen 2001). Furthermore, the kick direction for the compact object that is inferred from the motions of optical knots (Thorstensen et al. 2001) is not *along* the jet axis, as would be expected, but is instead perpendicular to it. Alternatively, an underdense relativistic jet could be driven by a collapsar (see Zhang et al. 2004; Nagataki et al. 2003). In this scenario, the ejecta knots observed in the jet regions could be pulled off at the interface of the jet and ambient ejecta plasma and are unlikely to be Fe-rich. Collapsars are believed to produce superenergetic explosions (i.e., γ -ray bursts), but estimates of the explosion energy for Cas A by LH03 at $(2\text{--}4) \times 10^{51}$ ergs suggest that it was closer to a normal supernova and therefore unlikely to have actually produced a γ -ray burst (Podsiadlowski et al. 2004).

Asymmetries in normal supernova explosions are much milder (Fryer & Heger 2000; Scheck et al. 2004). Whether these explosions can produce the observed asymmetry depends sensitively on the exploding star. Asymmetries are effectively erased if the star retains much of its hydrogen envelope (see Chevalier

& Soker 1989 for the case of 1987A). Loss of the hydrogen envelope could allow asymmetries to persist through breakout, and this may explain the jetlike structures in Cas A, since it was much less massive at explosion than the progenitor of SN 1987A. Although these arguments are speculative, we expect to reach much firmer conclusions through spectroscopy of faint jet knots with the VLP data and by coupling hydrodynamics with a treatment of the ionization balance and electron heating.

Point source.—The deep image gives no evidence for an extended pulsar wind nebula surrounding the point source. As ray-tracing simulations confirm, the slightly extended appearance of the point-source image can be explained by the change in the slightly off-axis position of the point source caused by the varying spacecraft roll angle in each individual observation segment.

Detailed analysis of the compact source, including spectra and timing, will be presented in a future paper. Here we simply note that the best single-component model is a blackbody ($\chi^2 = 493.7$ for 315 degrees of freedom) for $T_{\text{bb}}^\infty = (4.89 \pm 0.07) \times 10^6$ K, an emitting surface with radius $R_{\text{bb}}^\infty = 0.83 \pm 0.03$ km, and an absorbing column of $N_{\text{H}} = (1.25 \pm 0.03) \times 10^{22}$ cm⁻². As in previous studies, the temperature is higher than expected from cooling models for a ~330 yr old neutron star, and the inferred size of the emitting region is small. Emission from discrete hot spots on the stellar surface may be indicated (Pavlov et al. 2000; Chakrabarty et al. 2001). A power-law model for the spectrum can be rejected.

4. CONCLUSIONS

A new million second observation of the supernova remnant Cassiopeia A has been obtained with the S3 CCD detector on the *Chandra X-Ray Observatory*. The ejecta have a bipolar structure, implying jets that were formed by the explosion. For such asymmetries to survive beyond the outer layers of the star, the explosion at its source must have an extreme collimation currently found only in hypernova models. Relativistic jets may indeed be indicated by the lack of appreciable Fe in their X-ray spectra, but the total inferred explosion energy for Cas A is closer to that of a normal supernova. Cas A thus provides good evidence that jets may also be produced by normal supernovae. The Fe ejecta observed elsewhere in the remnant hold clues to the nucleosynthesis that took place during the explosion. Addressing these kinds of questions with detailed modeling and analysis of these data should provide insights into the explosion of Cas A.

We thank Alexei Khokhlov for scientific discussion and the referee for helpful suggestions. This work is supported by a grant from the CXC GO program; J. M. L. was also supported by basic research funds of the Office of Naval Research.¹⁸

¹⁸ For more information about the Cas A VLP, see <http://lheawww.gsfc.nasa.gov/users/hwang/casavlp.html>.

REFERENCES

- Blondin, J. M., Lundqvist, P., & Chevalier, R. A. 1996, *ApJ*, 472, 257
 Chakrabarty, D., et al. 2001, *ApJ*, 548, 800
 Chevalier, R. A., & Oishi, J. 2003, *ApJ*, 593, L23
 Chevalier, R. A., & Soker, N. 1989, *ApJ*, 341, 867
 DeLaney, T. A., & Rudnick, L. 2003, *ApJ*, 589, 818
 DeLaney, T. A., et al. 2004, *ApJ*, 613, 343
 Fesen, R. A. 2001, *ApJS*, 133, 161
 Fryer, C. L., & Heger, A. 2000, *ApJ*, 541, 1033
 Gotthelf, E. V., Koralesky, B., Rudnick, L., Jones, T. W., Hwang, U., & Petre, R. 2001, *ApJ*, 552, L39
 Hines, D. C., et al. 2004, *ApJS*, 154, 290
 Hughes, J. P., Rakowski, C. E., Burrows, D. N., & Slane, P. O. 2000, *ApJ*, 528, L109
 Hwang, U., Holt, S. S., & Petre, R. 2000, *ApJ*, 537, L119
 Hwang, U., & Laming, J. M. 2003, *ApJ*, 597, 362 (HL03)
 Iyudin, A. F., et al. 1994, *A&A*, 284, L1
 Khokhlov, A. M., Höflich, P. A., Oran, E. S., Wheeler, J. C., Wang, L., & Chtchelkanova, A. Yu 1999, *ApJ*, 524, L107
 Laming, J. M., & Hwang, U. 2003, *ApJ*, 597, 347 (LH03)
 Nagataki, S., Mizuta, A., Yamada, S., Takabe, H., & Sato, K. 2003, *ApJ*, 596, 401
 Pavlov, G. G., Zavlin, V. E., Aschenbach, B., Trümper, J., & Sanwal, D. 2000, *ApJ*, 531, L53
 Pinto, P. A., & Woosley, S. E. 1988, *Nature*, 333, 534
 Podsiadowski, Ph., Mazzali, P. A., Nomoto, K., Lazzati, D., & Cappellaro, E. 2004, *ApJ*, 607, L17
 Scheck, L., Plewa, T., Janka, H.-Th., Kifonidis, K., & Müller, E. 2004, *Phys. Rev. Lett.*, 92, 011103
 Tananbaum, H. 1999, *IAU Circ.*, 7246, 1
 Thorstensen, J. R., Fesen, R. A., & van den Bergh, S. 2001, *AJ*, 122, 297
 Truelove, J. K., & McKee, C. F. 1999, *ApJS*, 120, 299
 Vink, J. 2004, *NewA Rev.*, 48, 61
 Vink, J., & Laming, J. M. 2003, *ApJ*, 584, 758
 Vink, J., et al. 2001, *ApJ*, 560, L79
 Willingale, R., Bleeker, J. A. M., van der Heyden, K. J., & Kaastra, J. S. 2003, *A&A*, 398, 1021
 Zhang, W., Woosley, S. E., & Heger, A. 2004, *ApJ*, 608, 365