

11-15-2013

# Socially Excluded Individuals Fail to Recruit Medial Prefrontal Cortex for Negative Social Scenes

Katherine E. Powers  
*Dartmouth College*

Dylan D. Wagner  
*Dartmouth College*

Catherine J. Norris  
*Dartmouth College*

Todd F. Heatherton  
*Dartmouth College*

Follow this and additional works at: <https://digitalcommons.dartmouth.edu/facoa>

 Part of the [Neuroscience and Neurobiology Commons](#), and the [Social and Behavioral Sciences Commons](#)

---

## Recommended Citation

Powers, Katherine E.; Wagner, Dylan D.; Norris, Catherine J.; and Heatherton, Todd F., "Socially Excluded Individuals Fail to Recruit Medial Prefrontal Cortex for Negative Social Scenes" (2013). *Open Dartmouth: Faculty Open Access Articles*. 3796.  
<https://digitalcommons.dartmouth.edu/facoa/3796>

This Article is brought to you for free and open access by Dartmouth Digital Commons. It has been accepted for inclusion in Open Dartmouth: Faculty Open Access Articles by an authorized administrator of Dartmouth Digital Commons. For more information, please contact [dartmouthdigitalcommons@groups.dartmouth.edu](mailto:dartmouthdigitalcommons@groups.dartmouth.edu).

# Socially excluded individuals fail to recruit medial prefrontal cortex for negative social scenes

Katherine E. Powers, Dylan D. Wagner, Catherine J. Norris, and Todd F. Heatherton

Department of Psychological and Brain Sciences, Dartmouth College, Hanover, NH, USA

**Converging behavioral evidence suggests that people respond to experiences of social exclusion with both defensive and affiliative strategies, allowing them to avoid further distress while also encouraging re-establishment of positive social connections. However, there are unresolved questions regarding the cognitive mechanisms underlying people's responses to social exclusion. Here, we sought to gain insight into these behavioral tendencies by using functional magnetic resonance imaging (fMRI) to examine the impact of social exclusion on neural responses to visual scenes that varied on dimensions of sociality and emotional valence. Compared to socially included participants, socially excluded participants failed to recruit dorsomedial prefrontal cortex (dmPFC), a brain region involved in mentalizing, for negative social scenes. Moreover, following social exclusion, dmPFC demonstrated a linear effect of valence, with greater activity to positive social scenes compared to negative social scenes. These results suggest that, following social exclusion, people display a preference for mentalizing about positive social information and tend to avoid negative aspects of their social world.**

**Keywords:** social exclusion; medial prefrontal cortex; withdrawal; mentalizing; social cognition

## INTRODUCTION

As a social species, humans have a fundamental need to belong. Baumeister and Leary (1995) proposed that developing and maintaining interpersonal relationships evolved as an adaptive mechanism to promote survival. Feeling socially excluded, which threatens the need to belong, has been associated with self-defeating behaviors, negative moods, and mental and physical health problems (Twenge *et al.*, 2001; Cacioppo *et al.*, 2006).

In order to avoid these adverse consequences, it is critical that humans are able to efficiently recognize and respond to threats of social exclusion. One theoretical model (Mitchell and Heatherton, 2009; Heatherton, 2011) suggests that the ability to detect and respond to exclusionary social threats relies on the ability to infer the thoughts, feelings and beliefs of others, a capability often referred to as having theory of mind or mentalizing (Gallagher and Frith, 2003; Mitchell *et al.*, 2006; Gobbini *et al.*, 2007). Critically, theory of mind allows people to recognize when evaluative judgments are possible and thus detect threats to inclusionary status. Due to the need to belong, these threats may motivate people to regulate their subsequent behaviors in order to forestall rejection or maintain their social bonds (Leary *et al.*, 1995; MacDonald and Leary, 2005). However, there are inconsistencies in the extant research investigating responses to social exclusion.

Some prior research suggests that social exclusion motivates withdrawal from the surrounding world and leads to feelings of emotional detachment or 'numbness' (Twenge *et al.*, 2001; Baumeister *et al.*, 2002). Consistent with this reasoning, socially excluded individuals exhibit reduced empathic concern for the plight of others (DeWall and Baumeister, 2006) and are less likely to engage in prosocial helping behavior (Twenge *et al.*, 2007). In other words, social exclusion apparently leads people to avoid others and to have less concern for them.

In contrast to the above research, other studies have found that social exclusion motivates participants to engage in affiliative behaviors and seek out positive social interactions. Gardner and colleagues demonstrated that social exclusion increases attention to social stimuli, as evidenced by enhanced memory for social information and events, as well as improved accuracy identifying facial expressions and emotional tones of spoken words (Gardner *et al.*, 2000; Pickett *et al.*, 2004). Similarly, Maner *et al.* (2007) showed that excluded participants displayed a greater desire to make new friends and form positive impressions of others.

More recently, researchers have suggested that people might employ concurrent strategies to protect the self from further distress, while simultaneously attempting to form positive social connections with others (Hess and Pickett, 2010). From this perspective, people avoid potentially negative social interactions while paying greater attention to those that suggest more positive social outcomes. In line with this reasoning, recent research by DeWall *et al.* (2009) using an eye-tracking paradigm found that excluded

Received 30 June 2011; Accepted 6 October 2011

Advance Access publication 15 November 2011

We would like to thank Terry Sackett and Sophie Palitz for assistance with data collection.

This work was supported by the National Institute of Mental Health (R01MH059282).

Correspondence should be addressed to Katherine E. Powers, Department of Psychological and Brain Sciences, Dartmouth College, 6207 Moore Hall, Hanover, NH 03755, USA.

E-mail: katherine.e.powers@dartmouth.edu

participants displayed decreased attention to negative social stimuli while selectively attending to signs of social acceptance.

These findings indicate that people's responses to social exclusion are more nuanced than simply avoiding or approaching others. However, there are unresolved questions regarding the cognitive processes that underlie individuals' differential reactions to social exclusion. As such, exploring neural mechanisms has the potential to provide insight into the nature of these cognitive responses. For instance, after experiencing an exclusionary social threat people may differentially engage attributional processes, or mentalize, to understand the intentions of others in their surrounding social world. The emerging neuroimaging literature on theory of mind has consistently implicated the medial prefrontal cortex as a central component of the neural systems that support such mentalizing (Frith and Frith, 2001; Mitchell *et al.*, 2002; Gallagher and Frith, 2003; Mitchell *et al.*, 2006; Gobbi *et al.*, 2007). Although the medial prefrontal cortex is large and has been implicated in multiple distinct tasks, neuroimaging findings have converged on a specific dorsal region of the medial prefrontal cortex (dmPFC) as being critically involved in mentalizing about social knowledge (for reviews, see Mitchell, 2008; Lieberman, 2010). Recently, we demonstrated that people spontaneously recruit this particular region of dmPFC when viewing natural social scenes (Wagner *et al.*, 2011), suggesting that complex social information generally promotes mental state attribution. Accordingly, dmPFC may index the extent to which people engage in mental state attribution for different types of social information and this may vary as a function of social relation status.

Given the behavioral research reviewed above, we propose that, following social exclusion, people should be more motivated to engage in mental state attribution for positive compared to negative social information. The goal of the present study was to test this hypothesis regarding the consequences of social exclusion by using functional magnetic resonance imaging (fMRI) to examine how neural responses to social cues are affected by social exclusion. If social exclusion promotes a subsequent desire to renew social connections, one might expect greater activity in the region of dmPFC associated with mentalizing when viewing positive social scenes. Furthermore, if social exclusion motivates withdrawal from signs of further social threat, one would expect less recruitment of this region of dmPFC when viewing negative social scenes. Here, we investigate these predictions by comparing neural responses of a group of participants who received a threat of future social exclusion to another group who believed they were likely to be socially included in the future.

## MATERIALS AND METHODS

### Participants

Thirty-four (22 females, age range 18–21 years) Dartmouth College undergraduates participated in this study. All

participants were right-handed, had no history of neurological problems and had normal or corrected-to-normal vision. They received course credit or were paid for their participation and gave informed consent in accordance with the guidelines set by the Committee for the Protection of Human Subjects at Dartmouth College.

### Materials and procedure

In order to experimentally manipulate social exclusion, we employed a modified version of the future alone versus future belonging paradigm (Twenge *et al.*, 2001) adapted for the MRI environment. This paradigm has been used extensively in past research to induce feelings of social exclusion and isolation (Baumeister *et al.*, 2002; DeWall & Baumeister, 2006; Maner *et al.*, 2007; Twenge *et al.*, 2001, 2002, 2003, 2007; DeWall *et al.*, 2008, 2009).

When participants arrived, they were informed that this study was examining the effect of personality on ecological perception. Once in the scanner, participants completed a computerized version of the Eysenck Personality Questionnaire (Eysenck and Eysenck, 1975) and then were provided with feedback they believed was derived from their answers. In reality, feedback was randomly assigned prior to the experimental session. Half of the participants ( $n = 17$ ) were told their future lives would be isolated and lonely (social exclusion), while the other half ( $n = 17$ ) were told that theirs would be filled with long-lasting, stable relationships (social inclusion). To increase believability, the feedback also included personality descriptions typically believed by the average person (i.e. the 'Barnum Effect'; Snyder, Shenkel and Lowery, 1977), as well as two statements regarding self-esteem and social skills accurately tailored to each participant (based on self-report information obtained in a mass survey). Immediately following feedback, participants completed a 24-item mood questionnaire (Vohs and Heatherton, 2001) to assess effectiveness of the manipulation.

Participants then underwent functional magnetic resonance imaging while viewing pictures selected from the International Affective Picture System (IAPS; Lang *et al.*, 2008) and categorizing each as an indoor or outdoor scene (a task chosen to bolster the cover story and minimize the likelihood that participants would infer the true purpose of the study). Pictures varied on dimensions of sociality (social and non-social) and valence (negative, neutral and positive) and were matched for arousal and basic visual properties (i.e. luminance, hue, saturation and RGB values). Example stimuli include: social negative (a funeral; a domestic dispute), social neutral (buying groceries; talking on the phone), social positive (children playing at a water park; a romantic dinner), non-social negative (a burning building; a car accident), non-social neutral (a stack of books; a spoon) and non-social positive (a beautiful landscape; a delicious desert). Critically, the non-social pictures did not contain any people. A total of 150 pictures (25 per category) were

presented for 2.5 s each. The order of the pictures was pseudo-randomized and counterbalanced across participants. In order to accurately estimate the hemodynamic response function, pictures were intermixed with passive fixation trials of variable durations (0–7500 ms). To minimize interruptions following the social exclusion manipulation, all pictures were presented in one functional run.

### fMRI procedure and analysis

Structural and functional data were collected on a Phillips Intera Achieva 3T scanner at Dartmouth College using an eight-channel phase arrayed coil. An Epson ELP-7000 LCD projector was used to project stimuli onto a screen at the end of the magnet bore that participants viewed via an angled mirror mounted on the head coil.

Structural images were acquired using a T1-weighted MP-RAGE protocol (160 sagittal slices, TR = 9.9 ms, TE = 4.6 ms, 8° flip angle, 1 × 1 × 1 mm voxels). Functional images were acquired using a T2\*-weighted echo-planar sequence (TR = 2500 ms, TE = 35 ms, 90° flip angle and field of view = 24 cm). Data were collected in one functional run consisting of 270 whole-brain volumes (36 axial slices per volume, 3 mm thick, 0.5 mm gap, 3 × 3 mm in-plane resolution).

Neuroimaging data were preprocessed and analyzed using SPM8 (Wellcome Department of Cognitive Neurology, London, UK). First, functional data were preprocessed to remove sources of noise and artifact and corrected for differences in slice acquisition time. Images were then realigned within the functional run to correct for head movement and unwrapped to reduce residual movement-related image distortions not corrected by realignment. Functional data were then normalized into standard space (3 mm isotropic voxels) based on the SPM8 EPI template that conforms to the ICBM 152 brain template (Montreal Neurological Institute, MNI). Finally, normalized data were spatially smoothed using a 6 mm full-width-at-half-maximum Gaussian kernel.

A general linear model (GLM) incorporating task effects and covariates of non-interest (linear trend, six movement parameters derived from realignment) was specified for each participant. Each GLM was convolved with a canonical hemodynamic response function (HRF) and used to generate a contrast image comparing social to non-social activations for each participant. These contrast images were collapsed across groups and entered into a second-level random effects analysis, thresholded at  $P < .001$  with an extent threshold of 10 contiguously activated voxels. This analysis resulted in a whole-brain statistical parametric map identifying regions displaying greater activity to social than non-social scenes.

In order to investigate the between-group differences of social exclusion vs social inclusion, we performed a region-of-interest (ROI) analysis on regions identified by this contrast. Parameter estimates ( $\beta$ ) for each participant were extracted by centering a 6 mm sphere on the voxels of

peak activation of all regions. ROIs were thus defined in an unbiased manner, as both groups (socially excluded and socially included) contributed equally to the statistical parametric map used for ROI identification. Parameter estimates were submitted to offline statistical analyses to examine effects of group and stimulus valence on regional brain responses to social vs non-social scenes.

## RESULTS

### Behavioral results

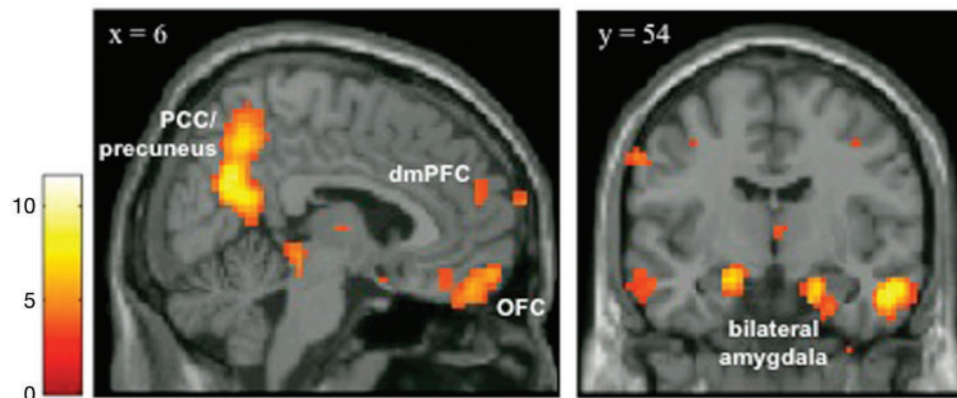
Analysis of the 24-item mood questionnaire revealed that socially excluded participants reported being in a more negative mood than socially included participants,  $t(32) = 2.86$ ,  $P = 0.007$ ;  $\text{Mean}_{\text{excluded}} = 64.3$ ,  $\text{s.d.} = 12.2$ ;  $\text{Mean}_{\text{included}} = 75.3$ ,  $\text{s.d.} = 10.0$ .

### fMRI results

A whole-brain analysis comparing regions that displayed a greater response for social scenes compared to non-social scenes for all participants revealed a system of regions including the medial prefrontal cortex, amygdala, posterior cingulate cortex/precuneus and regions of the inferotemporal cortex (Figure 1 and Table 1). These are areas that are typically activated in response to viewing social scenes (e.g. Iacoboni *et al.* 2004; Wagner *et al.*, 2011).

To investigate the effect of social exclusion on the neural response to social vs non-social scenes, a difference score for neural activity during social scenes relative to non-social scenes was calculated for each participant for all valence categories (negative, neutral and positive) in each ROI identified in the previously described contrast. Positive difference scores indicate greater activity to social scenes, while negative difference scores indicate less activity to social scenes, both relative to non-social scenes of the same valence. For each ROI, these difference scores were interrogated using a mixed model ANOVA, with group (social inclusion and social exclusion) as a between-subjects factor and scene valence (negative, neutral and positive) as a within-subjects factor.

This analysis revealed that dmPFC was significantly modulated by social exclusion. Specifically, there was a main effect of valence, such that the difference in dmPFC activity between social and non-social scenes was greater for negatively valenced scenes than either neutral or positive scenes,  $F(2,64) = 8.06$ ,  $P = 0.001$ . Moreover, there was a main effect of group, such that the difference between social and non-social scenes was greater for the socially included compared to socially excluded participants,  $F(2,31) = 4.61$ ,  $P = 0.039$ . Importantly, these effects were qualified by a significant valence by group interaction,  $F(2,64) = 3.82$ ,  $P = 0.027$ . For the negatively valenced pictures, socially excluded participants demonstrated less dmPFC activity to social than non-social scenes (negative difference scores), whereas socially included participants showed greater dmPFC activity to social than non-social



**Fig. 1** Results from a whole-brain, random-effects analysis of all participants contrasting social scenes to non-social scenes ( $P < 0.001$ , cluster extent threshold of 10 contiguous voxels). Results reveal a network of regions including the medial prefrontal cortex, amygdala, posterior cingulate cortex/precuneus and regions of the inferotemporal cortex, areas that have been consistently activated in previous research in response to viewing social scenes. This statistical parametric map was used to generate unbiased regions of interest to interrogate for effects of group (socially excluded vs. socially included) and scene valence (negative, neutral, positive).

**Table 1** Brain regions demonstrating greater activation to social than non-social scenes for all participants

Region (BA)	Coordinates			t-value	voxels
	x	y	z		
dmPFC (9)	6	54	21	3.73	10
dmPFC (10)	9	63	9	4.08	12
PCC/precuneus (7)	3	-60	30	11.18	607
Lateral fusiform (20)	54	-6	-27	9.12	436
Temporal pole (21)	-54	-6	-21	4.41	40
Amygdala	-18	-9	-18	7.22	87
Subgenual ACC (25)	3	9	-18	4.26	16
OFC (11)	-6	51	-21	6.48	234
Inferior parietal lobule (5)	36	-45	60	4.30	16
Precentral gyrus (6)	-63	-9	39	5.10	32
Precentral gyrus (6)	-39	-6	48	4.51	29
Dorsal premotor cortex (6)	45	0	39	6.23	106
Superior temporal gyrus (38)	-39	12	-33	4.96	20
Middle occipital gyrus (19)	57	-75	6	11.60	1381
Middle occipital gyrus (19)	-54	-81	3	10.05	931
Thalamus	3	-12	6	4.91	13
Brainstem	3	-33	-6	5.47	42
Cerebellum	45	-51	-27	9.08	203
Cerebellum	-45	-48	-27	6.38	92

Notes: Brain regions are listed along with approximate Brodmann Area (BA) in parentheses. Coordinates are in Montreal Neurological Institute stereotaxic space. PFC, prefrontal cortex; PCC, posterior cingulate cortex; OFC, orbitofrontal cortex; ACC, anterior cingulate cortex.

scenes (positive difference scores). There were no between-group differences for positive and neutral scenes (both  $P$ 's  $> 0.17$ ) (Figure 2).

Importantly, this effect was driven primarily by the social scenes. When the analysis was restricted to non-social scenes only, there were no between-group differences in negative, neutral or positive scenes in dmPFC (all  $P$ 's  $> 0.40$ ). That is, the interaction pattern observed cannot be attributed to the non-social scenes.

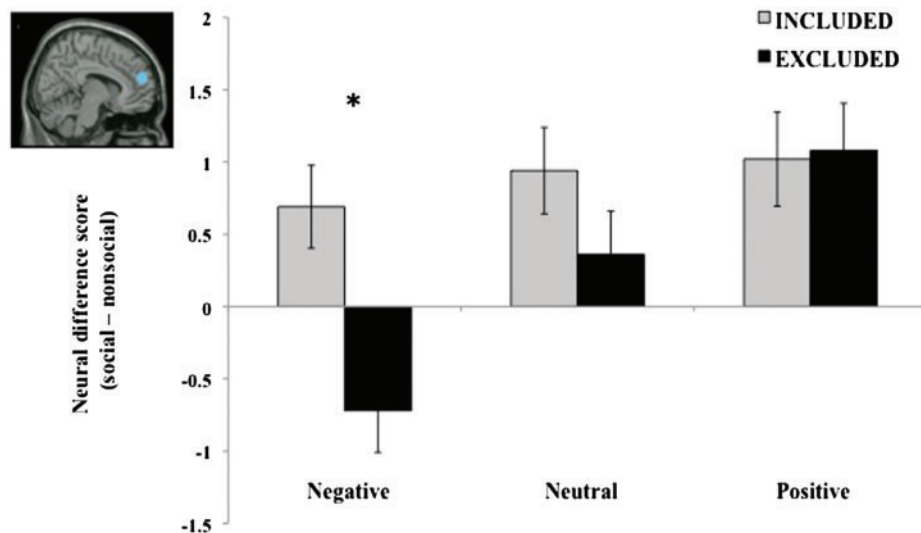
We also performed a linear trend analysis on the neural difference scores in dmPFC to test the linear relationship across valence categories within each group. This analysis revealed a significant linear relationship ( $P < 0.001$ ) for socially excluded participants. Specifically, as the valence of the scenes becomes more positive, dmPFC activity to social scenes increases. This relationship was not observed for socially included participants ( $P = 0.40$ ) (Figure 2).

In order to investigate whether observed differences in dmPFC activity were attributable to differences in mood, we ran a regression analysis testing this mediational model. Consistent with prior behavioral research (e.g. Twenge *et al.*, 2007; DeWall *et al.*, 2009), results revealed that mood did not significantly mediate the relationship between social exclusion and dmPFC activity ( $P = 0.78$ ).

Only one other region (orbitofrontal cortex, OFC) displayed a main effect of group,  $F(1,32) = 4.69$ ,  $P = 0.038$ , such that socially included participants displayed greater activity to social than non-social scenes compared to the socially excluded participants. There was no main effect of valence ( $P = 0.19$ ) or valence by group interaction in OFC ( $P = 0.58$ ). No other regions showed significant main effects of group (all  $P$ 's  $> 0.10$ ) or significant group by valence interactions (all  $P$ 's  $> 0.15$ ).

## DISCUSSION

Given the fundamental drive to establish and maintain social relationships, responding to exclusionary social threats is critical for our survival as a social species. Our results suggest that the threat of social exclusion alters processing of social cues such that people subsequently engage in more apparent mentalizing when viewing positive compared to negative social scenes. We propose that these strategies reflect differential engagement of neural regions involved in understanding and empathizing with others.



**Fig. 2** Analysis of difference scores derived from parameter estimates for social scenes relative to non-social scenes within dmPFC revealed that socially excluded participants demonstrated reduced activity specifically for negative social scenes. dmPFC activity increased in a linear fashion across valence categories (from negative to neutral to positive) only for socially excluded participants ( $P < .001$ ). Inset displays location of dmPFC ROI (6,54,21). Coordinates are reported in MNI stereotaxic space.  $*P < 0.001$ . Bars indicate standard error of the mean.

In line with prior research (e.g. Wagner *et al.*, 2011), viewing social compared to non-social scenes activated the ‘social brain’, a system of brain regions that have consistently been shown to respond to social information (for reviews, see Lieberman, 2007; Adolphs, 2009; Heatherton, 2011). As predicted, a region of dmPFC was uniquely sensitive to social exclusion and this varied as a function of stimulus valence. Importantly, this specific region of dmPFC has been found across numerous studies to be implicated in social cognition and mentalizing (Mitchell, 2008; Lieberman, 2010) and overlaps with the area of dmPFC found in our prior work on spontaneous mentalizing (Wagner *et al.* 2011). Crucially, this effect was driven primarily by social scenes, as there was no effect of social exclusion on neural responses to non-social scenes.

Across numerous neuroimaging studies, this particular region of dmPFC has been implicated in thinking about the mental and emotional states of other people, both in explicit mentalizing tasks (Mitchell *et al.*, 2002, 2004, 2006; for review, see Gallagher and Frith, 2003) and also when no mentalizing instructions are given (Iacoboni *et al.*, 2004; Spiers and Maguire, 2006; Gobbini *et al.*, 2007; Wagner *et al.*, 2011). In keeping with this functional role of dmPFC and with previous behavioral research documenting the potential protective nature of withdrawal responses (e.g. Baumeister *et al.*, 2002), we propose that the differential activation of dmPFC to negative social scenes following social exclusion is an adaptive response that serves to blunt negative aspects of the social world. This interpretation is consistent with an eye-tracking study by DeWall and colleagues (2009) demonstrating that socially excluded participants attended more to positive than negative social information.

However, our findings are indicative of more than merely attentional avoidance. Indeed, medial prefrontal regions implicated in attention and executive control processes are consistently more dorsal than the region reported here (Wager *et al.*, 2004). We speculate that the failure to recruit this particular region of dmPFC following social exclusion suggests a desire to avoid considering the mental states of potential social threats. More broadly, this pattern of activity may reflect a general desire to avoid any additional socially derived negative emotion after receiving an exclusionary social threat. Likewise, as predicted by behavioral research, socially excluded participants displayed increased dmPFC activity to visual depictions of positive social scenes, suggesting that social exclusion leads to greater mentalizing for positive social cues.

The specific region of dmPFC reported here has been linked to empathic emotional inferences (Hooker *et al.*, 2008; Rameson *et al.*, 2012) and empathic responses to seeing others experiencing rejection (Masten *et al.*, 2011). Moreover, previous research has demonstrated that activity within this particular region is strongly correlated with individual differences in trait empathizing (Wagner *et al.*, 2011) and has been implicated in making accurate empathic inferences for the emotions of others (Zaki *et al.*, 2009). Additionally, DeWall and Baumeister (2006) found that socially excluded people reported less empathic concern for the social misfortunes of others, such as being rejected by a romantic partner. Taken together, these findings lend credence to our conjecture that reduced dmPFC activity following social exclusion reflects less mentalizing for the contents of negative social scenes.

By providing evidence of a nuanced neural pattern of responses to social exclusion, our results extend existing

theories hypothesizing both approach and avoidance responses to social exclusion (e.g. Hess and Pickett, 2010; Maner *et al.*, 2007) by demonstrating that these strategies reflect differential engagement of neural regions involved in understanding and empathizing with others. Moreover, our results are consistent with a theoretical model proposing that both detecting and responding to social threat modulates activity in dmPFC (Heatherston, 2011). These results suggest that threats to social exclusion instigate regulatory responses to cope with potential threat. One of the earliest models of self-regulation (Carver and Scheier, 1982) proposed that people continue to regulate their behaviors in adaptive and profitable ways when favorable outcomes are expected. However, when unfavorable outcomes are expected, people escape from self-awareness and withdrawal from further attempts. Our findings converge nicely with the Carver and Scheier model, since unfavorable outcomes following social exclusion (e.g. thinking about the mental states of potential social threats) are met with mental withdrawal, while favorable outcomes (e.g. considering re-establishing social connections) are met with continued, possibly enhanced efforts.

Our findings provide insight into the cognitive processes underlying behavioral consequences of social exclusion. We speculate that social exclusion results in a suspension of the attributional processes that are typically deployed when attempting to understand social situations, at least for negative social information. In this way, failure to mentalize about negative aspects of the social world may undermine future behavioral efforts. Such an interpretation is consistent with behavioral studies that have shown that social exclusion leads to self-defeating behaviors such as aggression (Twenge *et al.*, 2001) and decreased empathy for others (DeWall and Baumeister, 2006).

Given the lack of additional control conditions, it can be difficult to separate the effects of social exclusion from changes in overall mood. However, we note that prior research using this paradigm has consistently failed to find any effects of generalized negative mood (see Twenge *et al.*, 2001, 2002, 2003, 2007; Baumeister *et al.*, 2002; DeWall and Baumeister, 2006; Maner *et al.*, 2007; DeWall *et al.*, 2009;). Thus, receiving negative feedback without an exclusionary social threat component has not been shown to significantly affect participants' behavior or cognitions. Furthermore, in the present study mood failed to mediate the relationship between social exclusion and dmPFC activity, providing further evidence that mood is not driving the observed effects.

Likewise, the lack of a neutral feedback condition may raise the possibility that the observed effects result from feeling socially included, rather than excluded. Again, we note that previous studies with neutral feedback conditions repeatedly find no differences between this condition and the social inclusion condition (Baumeister *et al.*, 2005; DeWall and Baumeister, 2006), suggesting that this condition functions as a reliable control. Indeed, previous work has directly

compared exclusionary to inclusionary social feedback in the absence of any additional conditions (Twenge *et al.*, 2007). Thus, in light of the consistency demonstrated by previous research using this paradigm, no other feedback conditions were included in the present study.

In summary, we used fMRI to examine the neural bases underlying the notion that social exclusion results in both defensive and affiliative responses (Hess and Pickett, 2010). Our results confirm previous research suggesting that people are motivated both to protect themselves from further distress (Twenge *et al.*, 2001; Baumeister *et al.*, 2002; DeWall and Baumeister, 2006) and seek out positive social connections (Gardner *et al.*, 2000; Pickett *et al.*, 2004; Maner *et al.*, 2007) following exclusionary social threats. Moreover, our results suggest that these responses to social exclusion may be explained as a reduced motivation to mentalize about negative aspects of the social world.

## REFERENCES

- Adolphs, R. (2009). The social brain: Neural basis of social knowledge. *Annual Review of Psychology*, 60, 693–716.
- Baumeister, R.F., DeWall, C.N., Ciarocco, N.J., Twenge, J.M. (2005). Social exclusion impairs self-regulation. *J Pers Soc Psychol*, 88(4), 589–604.
- Baumeister, R.F., Leary, M.R. (1995). The need to belong: Desire for interpersonal attachments as a fundamental human motivation. *Psychological Bulletin*, 117(3), 497–529.
- Baumeister, R.F., Twenge, J.M., Nuss, C. (2002). Effects of social exclusion on cognitive processes: Anticipated aloneness reduces intelligent thought. *Journal of Personality and Social Psychology*, 83(4), 817–827.
- Cacioppo, J.T., Hughes, M.E., Waite, L.J., Hawkley, L.C., Thisted, R.A. (2006). Loneliness as a specific risk factor for depressive symptoms: cross sectional and longitudinal analyses. *Psychology and Aging*, 21(1), 140–151.
- Carver, C.S., Scheier, M.F. (1982). Control theory: a useful conceptual framework for personality-social, clinical, and health psychology. *Psychological Bulletin*, 92(1), 111–135.
- DeWall, C.N., Baumeister, R.F. (2006). Alone but feeling no pain: effects of social exclusion on physical pain tolerance and pain threshold, affective forecasting, and interpersonal empathy. *Journal of Personality and Social Psychology*, 91(1), 1–15.
- DeWall, C.N., Baumeister, R.F., Vohs, K.D. (2008). Satiated with belongingness? Effects of acceptance, rejection, and task framing on self-regulatory performance. *Journal of Personality and Social Psychology*, 95, 1367–1382.
- DeWall, C.N., Maner, J.K., Rouby, D.A. (2009). Social exclusion and early-stage interpersonal perception: selective attention to signs of acceptance following social exclusion. *Journal of Personality and Social Psychology*, 96(4), 729–741.
- Eysenck, H.J., Eysenck, S.B. (1975). *Manual of the Eysenck Personality Questionnaire*. San Diego, CA: EDITS.
- Frith, U., Frith, C. (2001). The biological basis of social interaction. *Current Directions in Psychological Science*, 10(5), 151–155.
- Gallagher, H.L., Frith, C.D. (2003). Functional imaging of 'theory of mind'. *Trends in Cognitive Psychology*, 7(2), 77–83.
- Gardner, W.L., Pickett, C.L., Brewer, M.B. (2000). Social exclusion and selective memory: how the need to belong affects memory for social information. *Personality and Social Psychology Bulletin*, 26(4), 486–496.
- Gobbini, M.I., Koralek, A.C., Bryan, R.E., Montgomery, K.J., Haxby, J.V. (2007). Two takes on the social brain: a comparison of theory of mind tasks. *Journal of Cognitive Neuroscience*, 19(11), 1803–1814.
- Heatherston, T.F. (2011). Neuroscience of self and self-regulation. *Annual Review of Psychology*, 62, 363–390.

- Hess, Y.D., Pickett, C.L. (2010). Social rejection and self- versus other-awareness. *Journal of Experimental Social Psychology*, 46(2), 453–456.
- Hooker, C.I., Verosky, S.C., Germine, L.T., Knight, R.T., D'Esposito, M. (2008). Mentalizing about emotion and its relationship to empathy. *Social Cognitive and Affective Neuroscience*, 3(3), 204–217.
- Iacoboni, M., Lieberman, M.D., Knowlton, B.J., et al. (2004). Watching social interactions produces dorsomedial prefrontal and medial parietal BOLD fMRI signal increases compared to a resting baseline. *NeuroImage*, 21(3), 1167–1173.
- Lang, P.J., Bradley, M.M., Cuthbert, B.N. (2008). *International Affective Picture System (IAPS): Affective Ratings of Pictures and Instruction Manual. Technical Report A-8*. Gainesville, FL: University of Florida.
- Leary, M.R., Tambor, E.S., Terdal, S.K., Downs, D.L. (1995). Self-esteem as an interpersonal monitor: the sociometer hypothesis. *Journal of Personality and Social Psychology*, 68(3), 518–530.
- Lieberman, M.D. (2007). Social cognitive neuroscience: a review of core processes. *Annual Review of Psychology*, 58, 259–89.
- Lieberman, M.D. (2010). Social cognitive neuroscience. In: Fiske, S., Gilbert, D.T., Lindzey, G., editors. *Handbook of Social Psychology* 5th edn. New York: McGraw Hill, pp. 143–193.
- MacDonald, G., Leary, M.R. (2005). Why does social exclusion hurt? The relationship between social and physical pain. *Psychological Bulletin*, 131(2), 202–223.
- Maner, J.K., DeWall, C.N., Baumeister, R.F., Schaller, M. (2007). Does social exclusion motivate interpersonal reconnection? Resolving the "porcupine problem." *Journal of Personality and Social Psychology*, 92(1), 42–55.
- Masten, C.L., Morelli, S.A., Eisenberger, N.I. (2011). An fMRI investigation of empathy for 'social pain' and subsequent prosocial behavior. *NeuroImage*, 55(1), 381–388.
- Mitchell, J.P. (2008). Contributions of functional neuroimaging to the study of social cognition. *Current Directions in Psychological Science*, 17(2), 142–146.
- Mitchell, J.P., Heatherton, T. (2009). Components of a social brain. In: Gazzaniga, M.S., editor. *Cognitive Neurosciences* 4th edn. Cambridge, MA: MIT Press, pp. 951–958.
- Mitchell, J.P., Heatherton, T.F., Macrae, C.N. (2002). Distinct neural systems subserving person and object knowledge. *Proceedings of the National Academy of Sciences*, 99(23), 15238–15243.
- Mitchell, J.P., Macrae, C.N., Banaji, M.R. (2004). Encoding-specific effects of social cognition on the neural correlates of subsequent memory. *Journal of Neuroscience*, 24(21), 4912–4917.
- Mitchell, J.P., Macrae, C.N., Banaji, M.R. (2006). Dissociable medial prefrontal contributions to judgments of similar and dissimilar others. *Neuron*, 50(4), 655–663.
- Pickett, C.L., Gardner, W.L., Knowles, M. (2004). Getting a cue: the need to belong and enhanced sensitivity to social cues. *Personality and Social Psychology Bulletin*, 30(9), 1095–1107.
- Rameson, L.T., Morelli, S.A., Lieberman, M.D. (2012). The neural correlates of empathy: experience, automaticity, and prosocial behavior. *Journal of Cognitive Neuroscience*, 24, 235–45.
- Snyder, C.R., Shenkel, R.J., Lowery, C.R. (1977). Acceptance of personality interpretations: the "Barnum Effect" and beyond. *Journal of Consulting and Clinical Psychology*, 45(1), 104–113.
- Spiers, H.J., Maguire, E.A. (2006). Spontaneous mentalizing during an interactive real world task: an fMRI study. *Neuropsychologia*, 44(10), 1674–1682.
- Twenge, J.M., Baumeister, R.F., DeWall, C.N., Ciarocco, N.J., Bartels, J.M. (2007). Social exclusion decreases prosocial behavior. *Journal of Personality and Social Psychology*, 92(1), 56–66.
- Twenge, J.M., Baumeister, R.F., Tice, D.M., Stucke, T.S. (2001). If you can't join them, beat them: effects of social exclusion on aggressive behavior. *Journal of Personality and Social Psychology*, 81(6), 1058–1069.
- Twenge, J.M., Catanese, K.R., Baumeister, R.F. (2002). Social exclusion causes self-defeating behavior. *Journal of Personality and Social Psychology*, 83(3), 606–615.
- Twenge, J.M., Catanese, K.R., Baumeister, R.F. (2003). Social exclusion and the deconstructed state: time perception, meaninglessness, lethargy, lack of emotion, and self-awareness. *Journal of Personality and Social Psychology*, 85(3), 409–423.
- Vohs, K.D., Heatherton, T.F. (2001). Self-esteem and threats to self: implications for self-construals and interpersonal perceptions. *Journal of Personality and Social Psychology*, 81(6), 1103–1118.
- Wager, T.D., Jonides, J., Reading, S. (2004). Neuroimaging studies of shifting attention: a meta-analysis. *NeuroImage*, 22(4), 1679–1693.
- Wagner, D.D., Kelley, W.M., Heatherton, T.F. (2011). Individual differences in the spontaneous recruitment of brain regions supporting mental state understanding when viewing natural social scenes. *Cerebral Cortex* [Epub ahead of print; doi:10.1093/cercor/bhr074].
- Zaki, J., Weber, J., Bolger, N., Ochsner, K. (2009). The neural bases of empathic accuracy. *Proceedings of the National Academy of Sciences*, 106(27), 11382–11387.